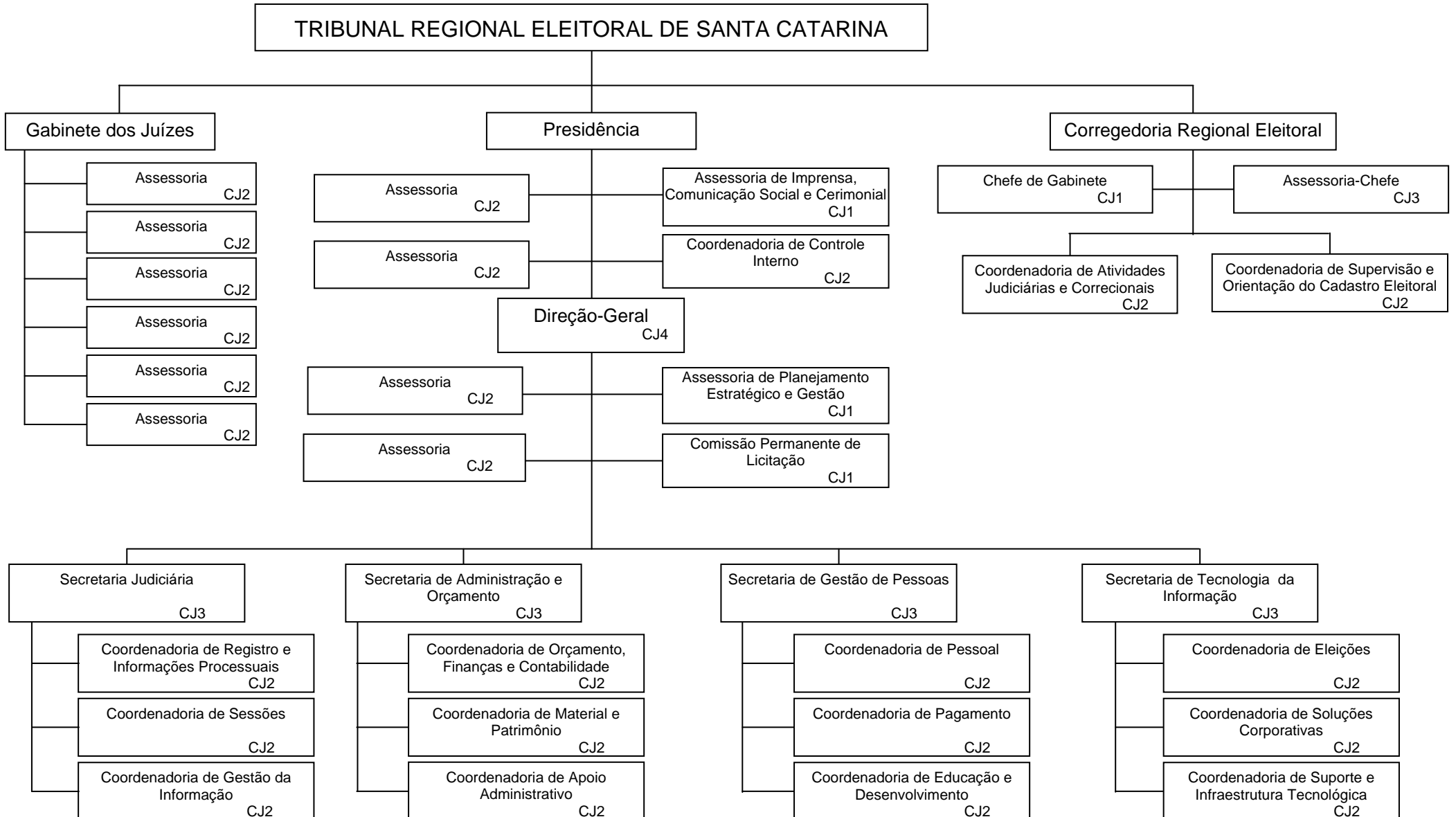




# Tribunal Regional Eleitoral de Santa Catarina

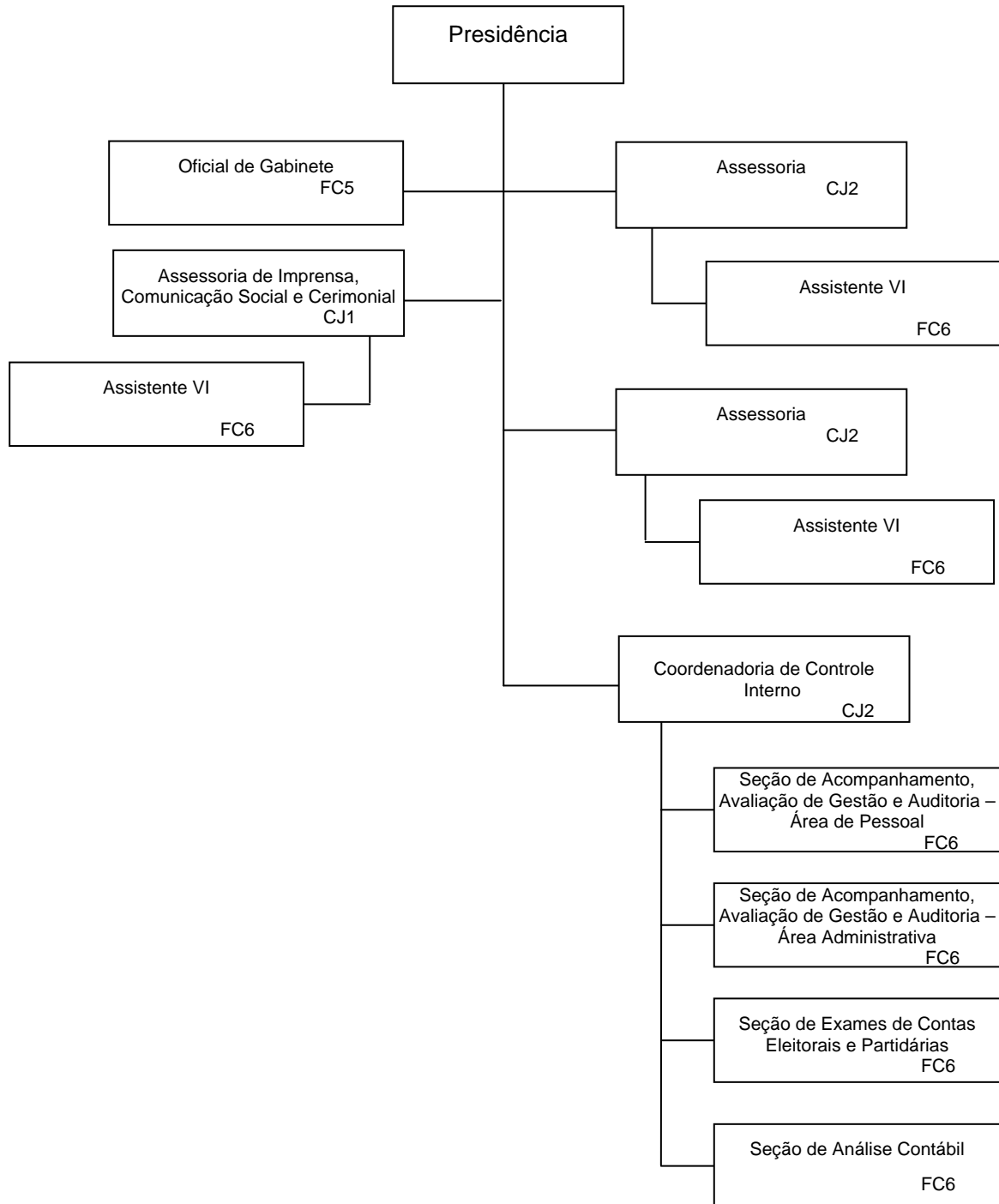
Anexo I da Resolução TRESA n. 7.866/2012





# Tribunal Regional Eleitoral de Santa Catarina

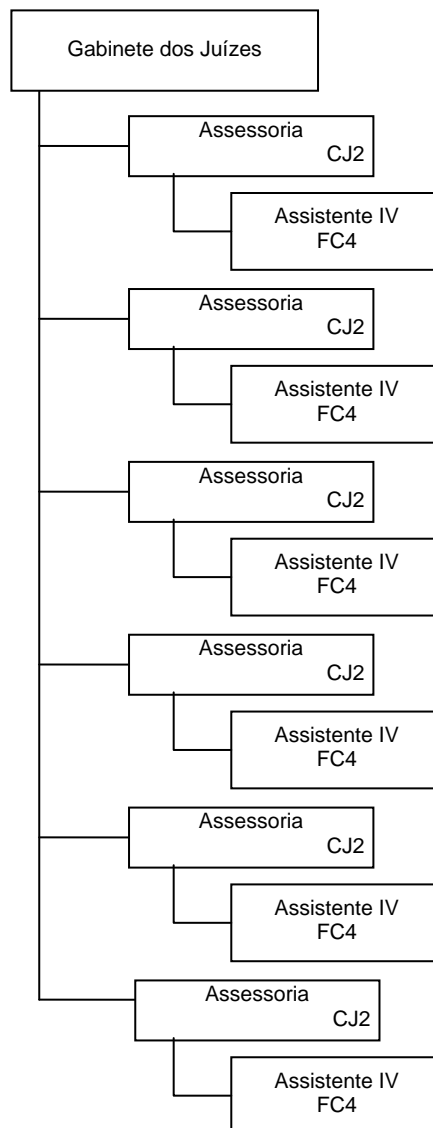
(fl. 2 do Anexo I da Resolução TRESA n. 7.866/2012)





# Tribunal Regional Eleitoral de Santa Catarina

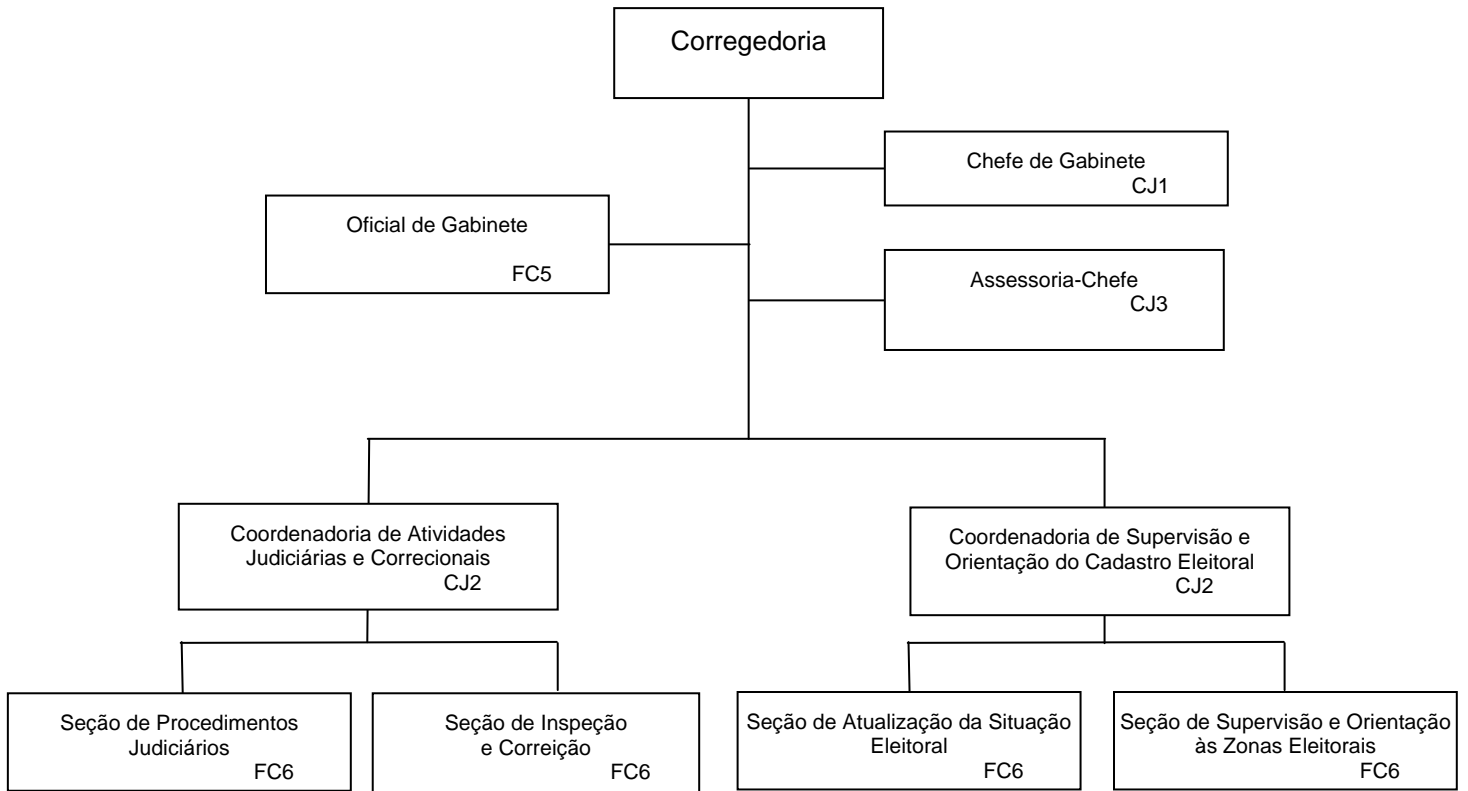
(fl. 3 do Anexo I da Resolução TRESA n. 7.866/2012)





# Tribunal Regional Eleitoral de Santa Catarina

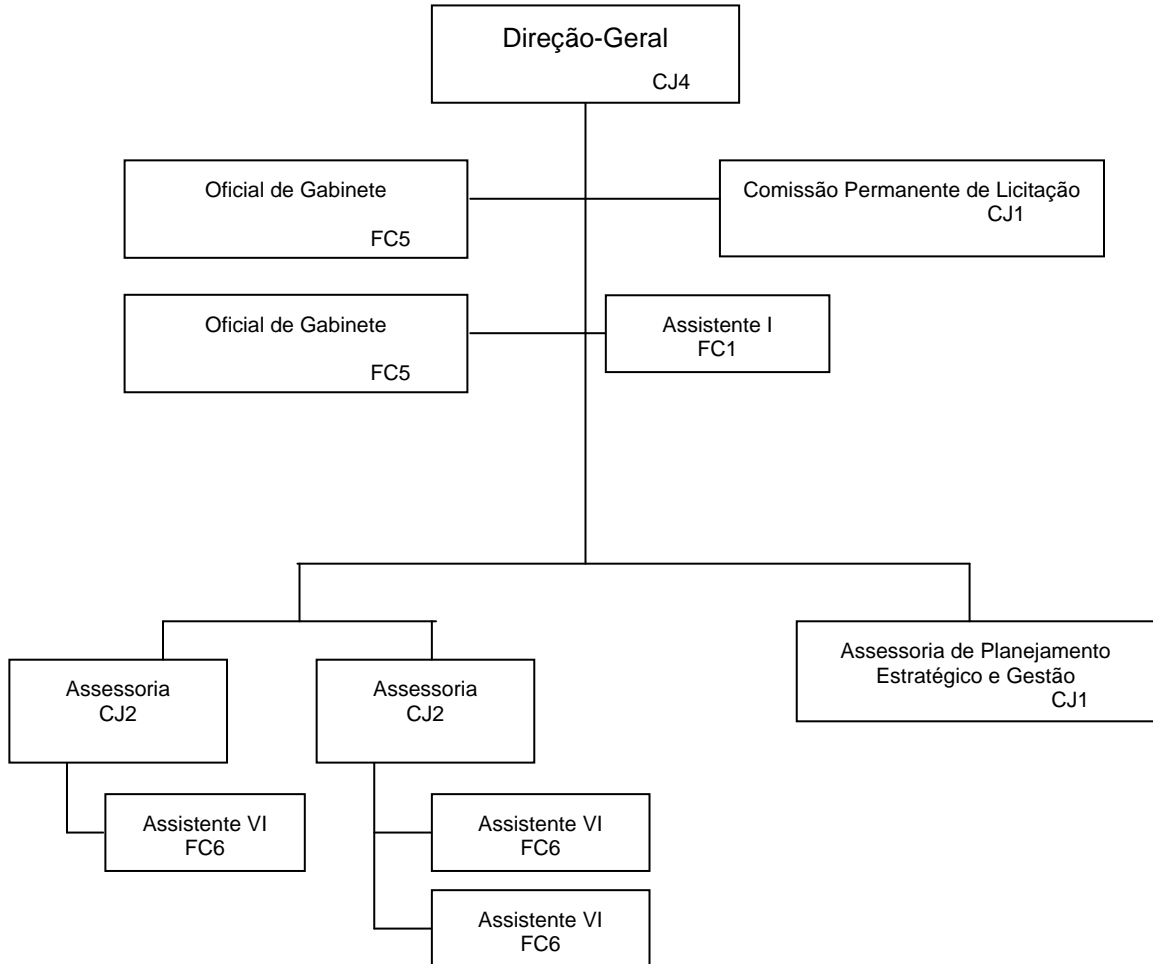
(fl. 4 do Anexo I da Resolução TRESA n. 7.866/2012)





# Tribunal Regional Eleitoral de Santa Catarina

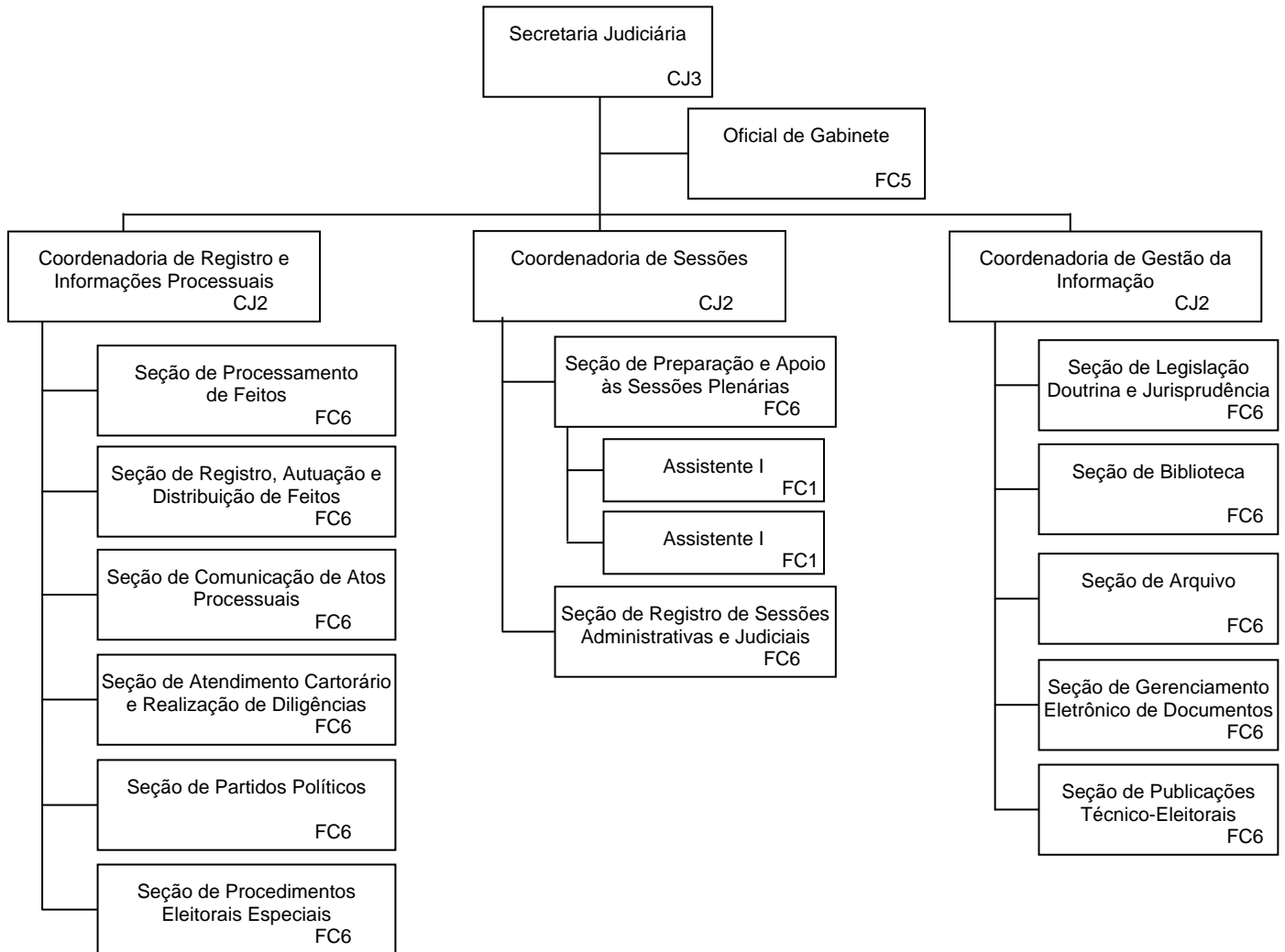
(fl. 5 do Anexo I da Resolução TRESA n. 7.866/2012)





# Tribunal Regional Eleitoral de Santa Catarina

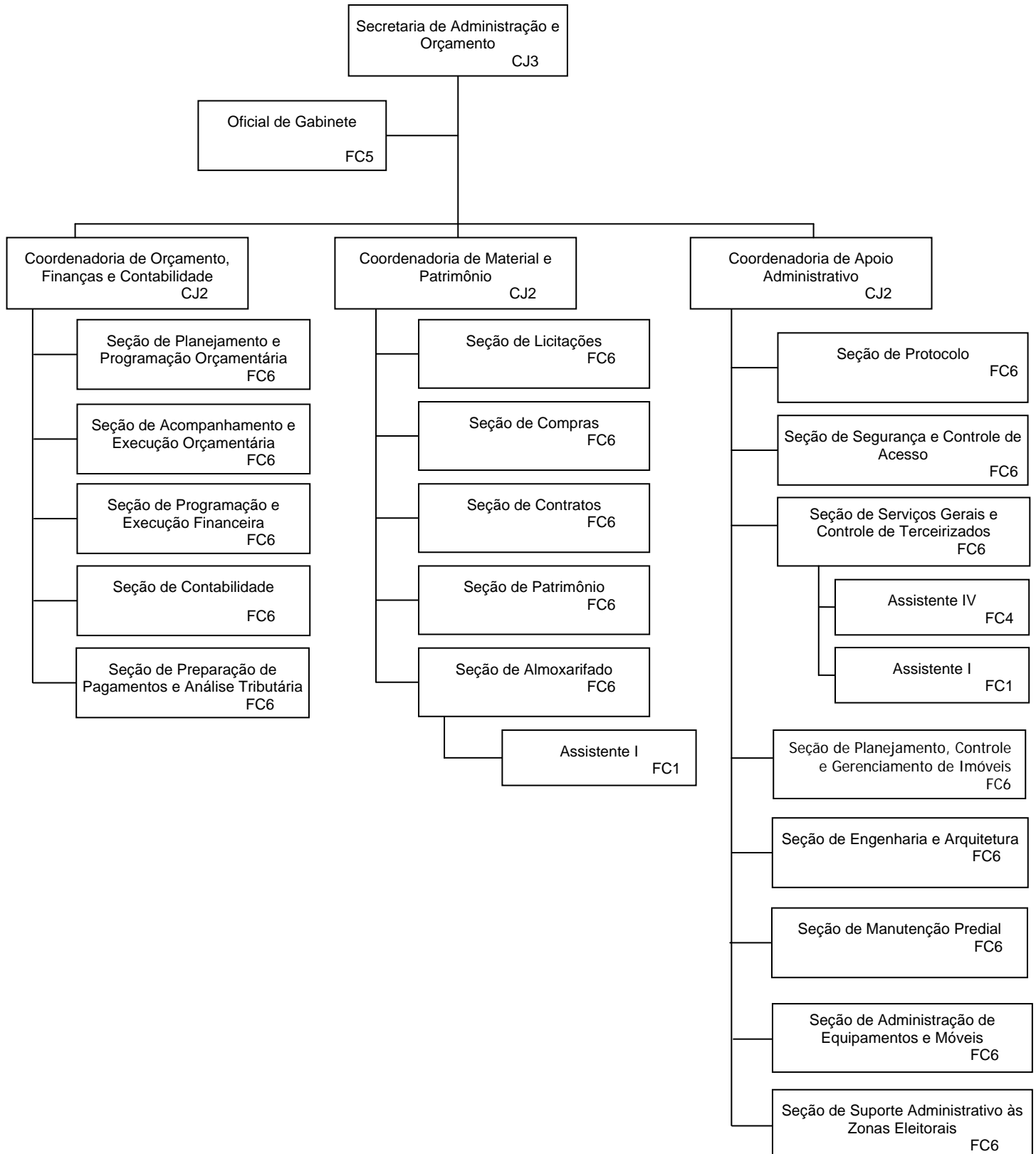
(fl. 6 do Anexo I da Resolução TRESA n. 7.866/2012)





# Tribunal Regional Eleitoral de Santa Catarina

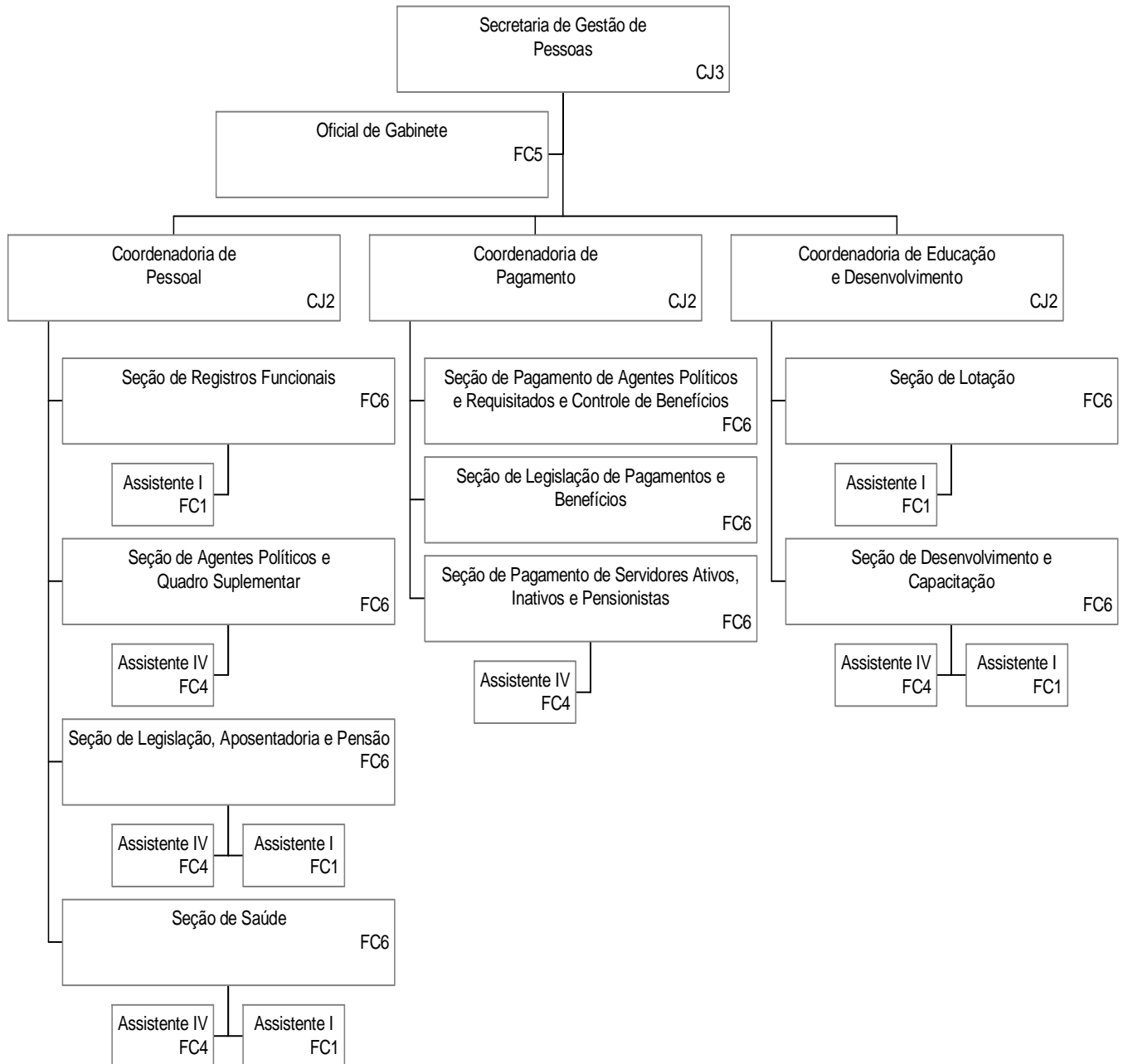
(fl. 7 do Anexo I da Resolução TRESA n. 7.866/2012)





# Tribunal Regional Eleitoral de Santa Catarina

(fl. 8 do Anexo I da Resolução TRESC n. 7.866/2012)







# Tribunal Regional Eleitoral de Santa Catarina

(fl. 9 do Anexo I da Resolução TRESA n. 7.866/2012)

