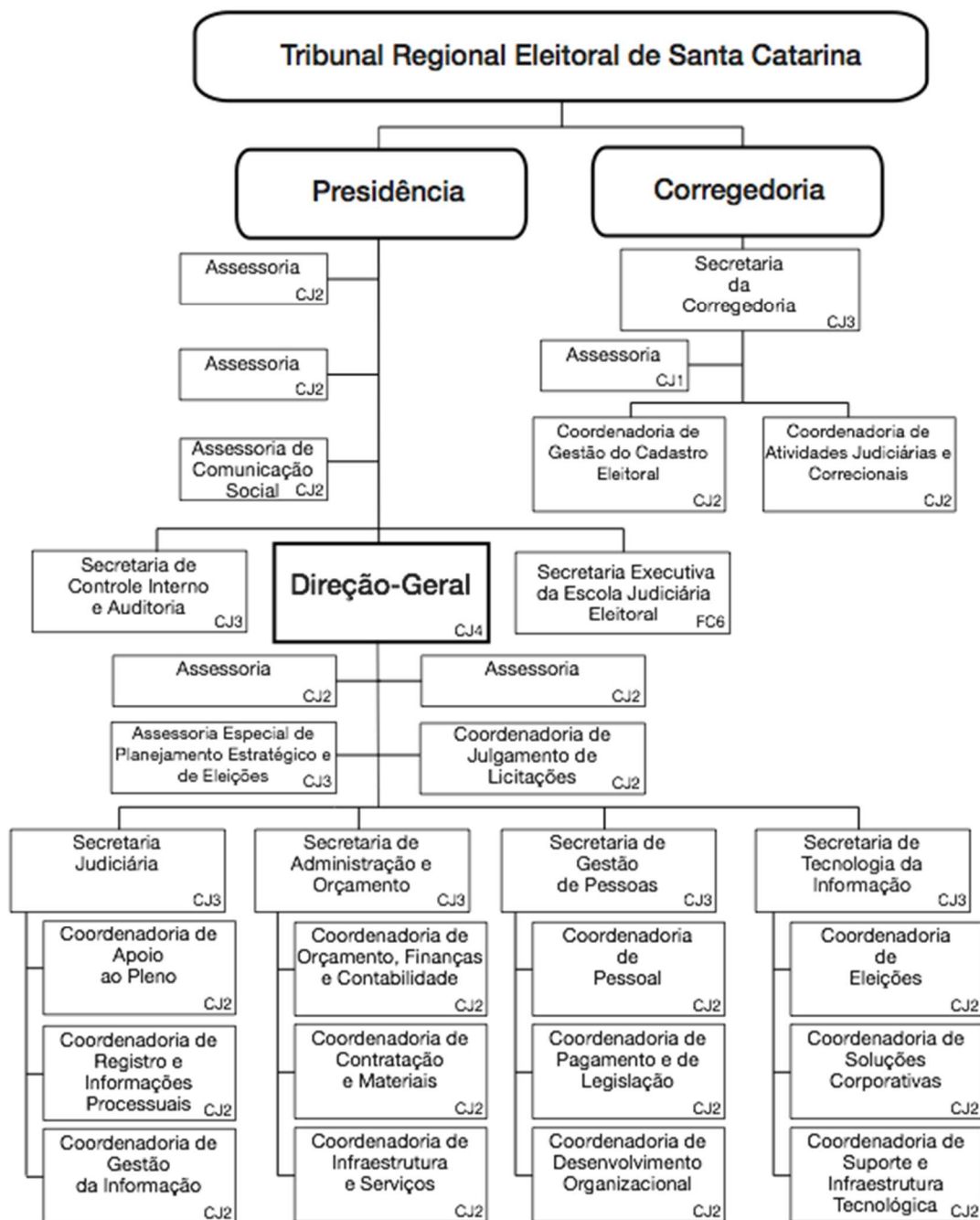




Tribunal Regional Eleitoral de Santa Catarina

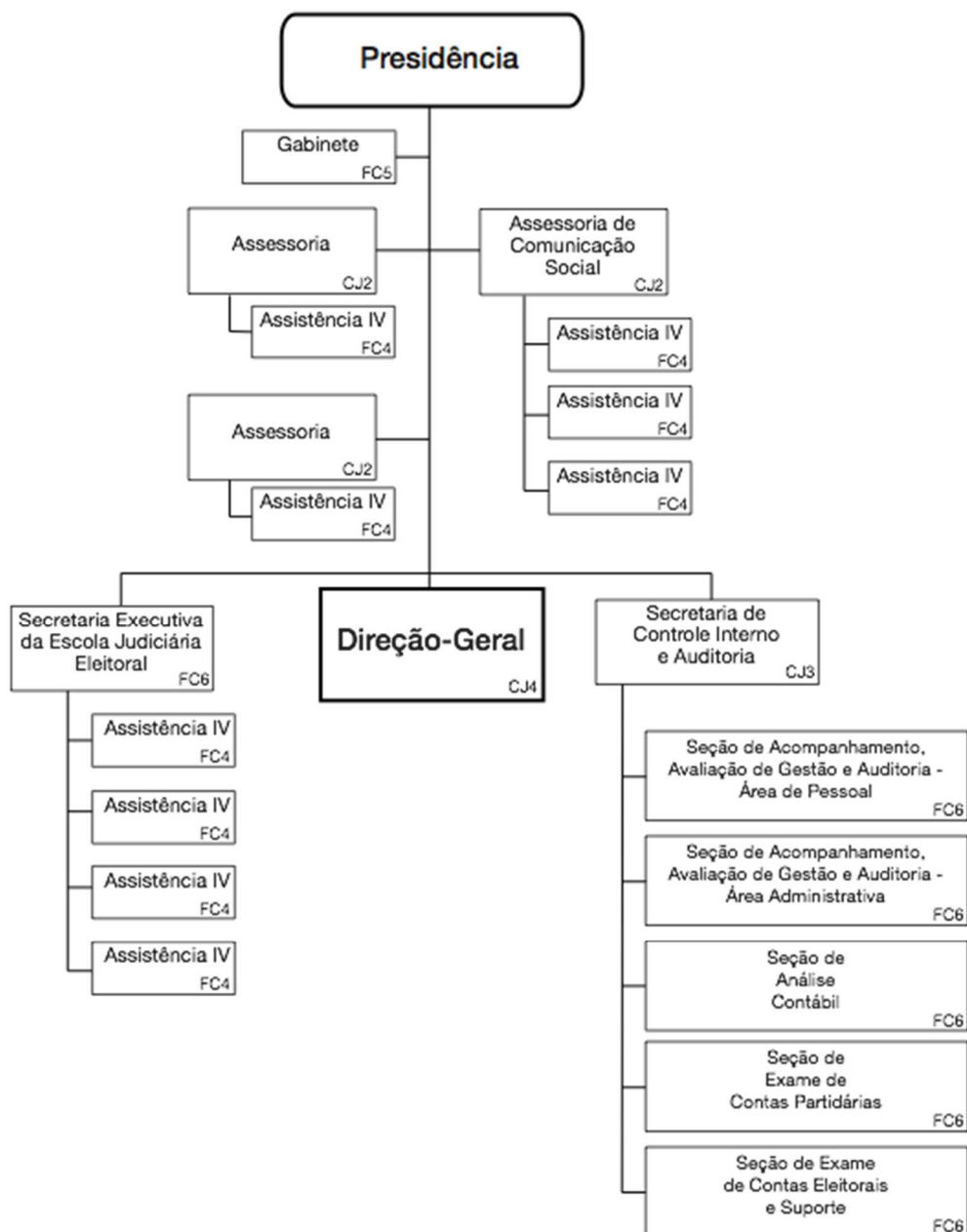
Anexo I - Resolução TRESA n. 7930/2015





Tribunal Regional Eleitoral de Santa Catarina

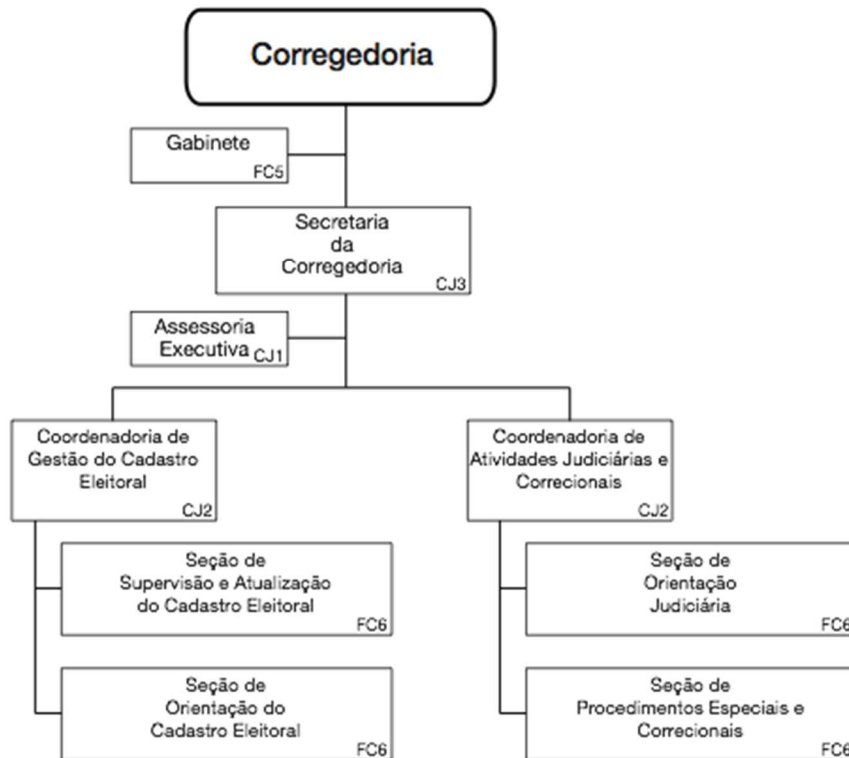
(fl. 2 do Anexo I da Resolução TRESO n. 7930/2015)





Tribunal Regional Eleitoral de Santa Catarina

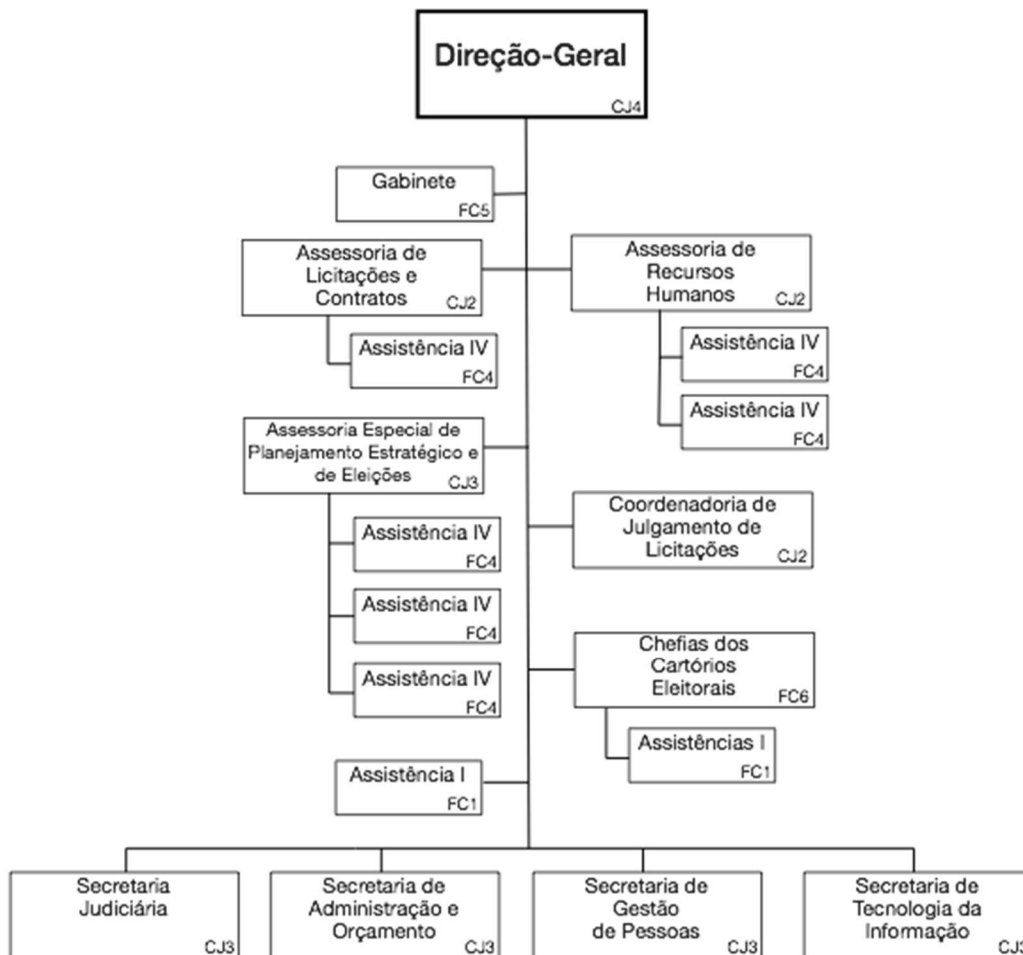
(fl. 3 do Anexo I da Resolução TRESA n. 7930/2015)





Tribunal Regional Eleitoral de Santa Catarina

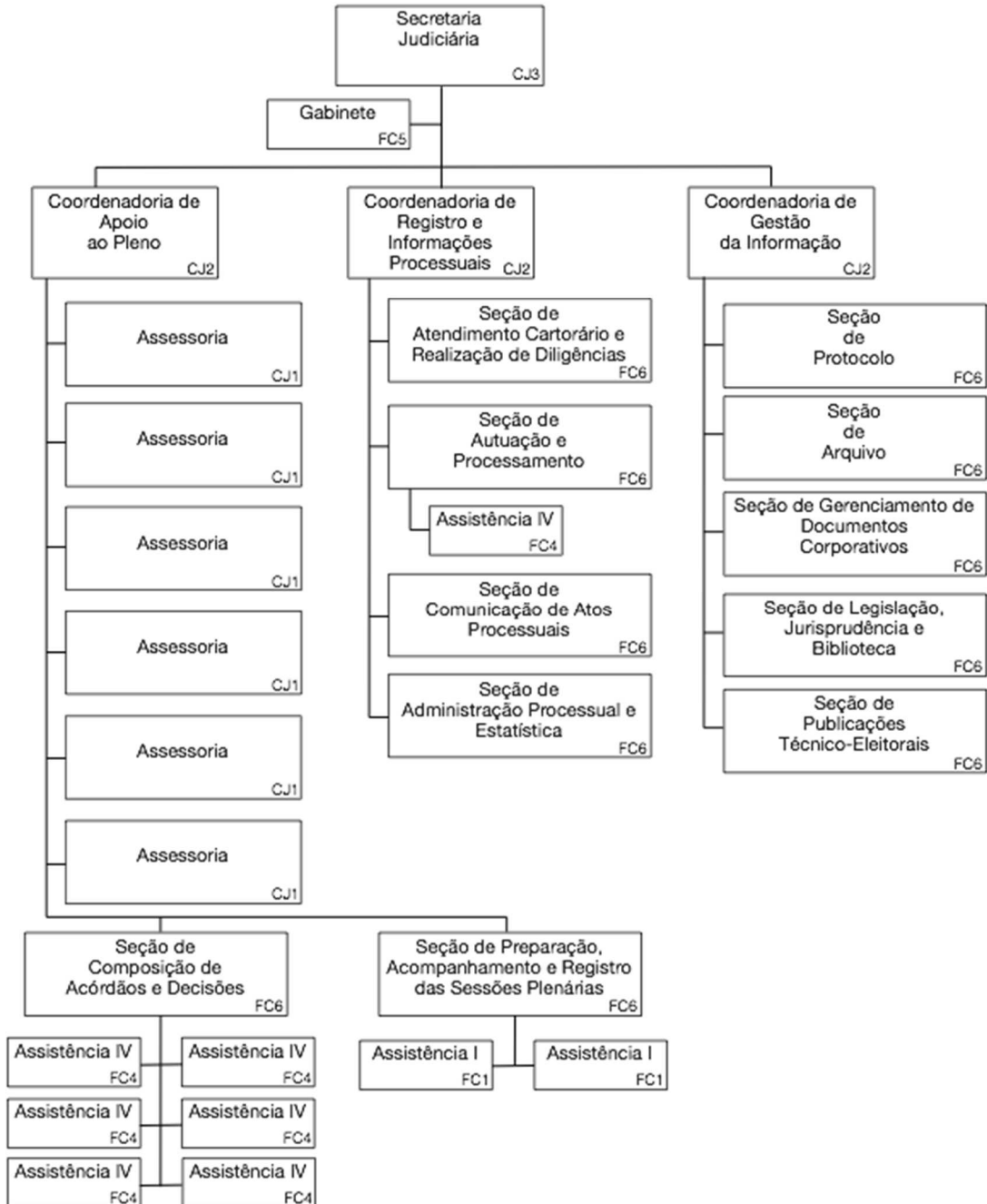
(fl. 4 do Anexo I da Resolução TRESA n. 7930/2015)





Tribunal Regional Eleitoral de Santa Catarina

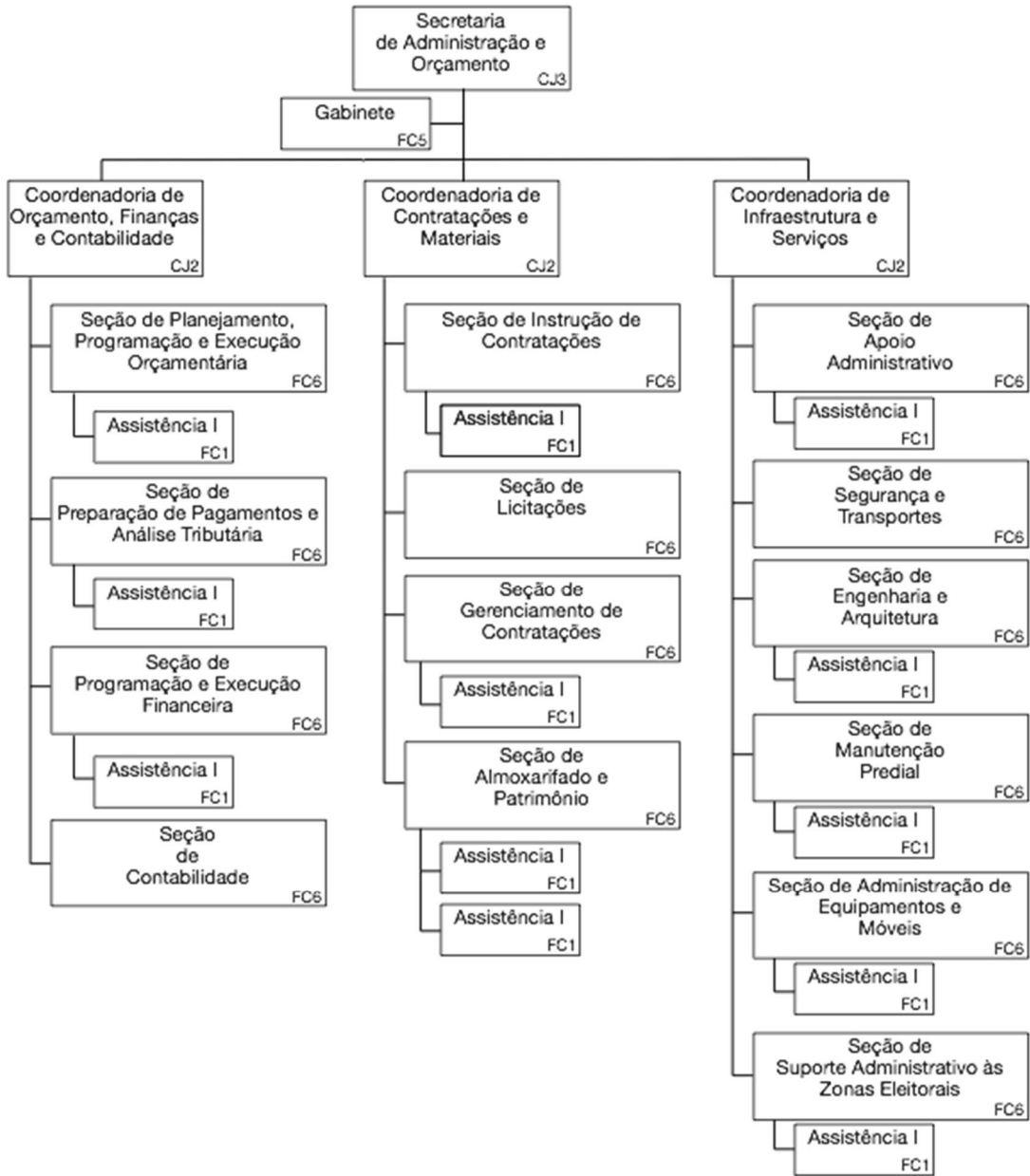
(fl. 5 do Anexo I da Resolução TRESA n. 7930/2015)





Tribunal Regional Eleitoral de Santa Catarina

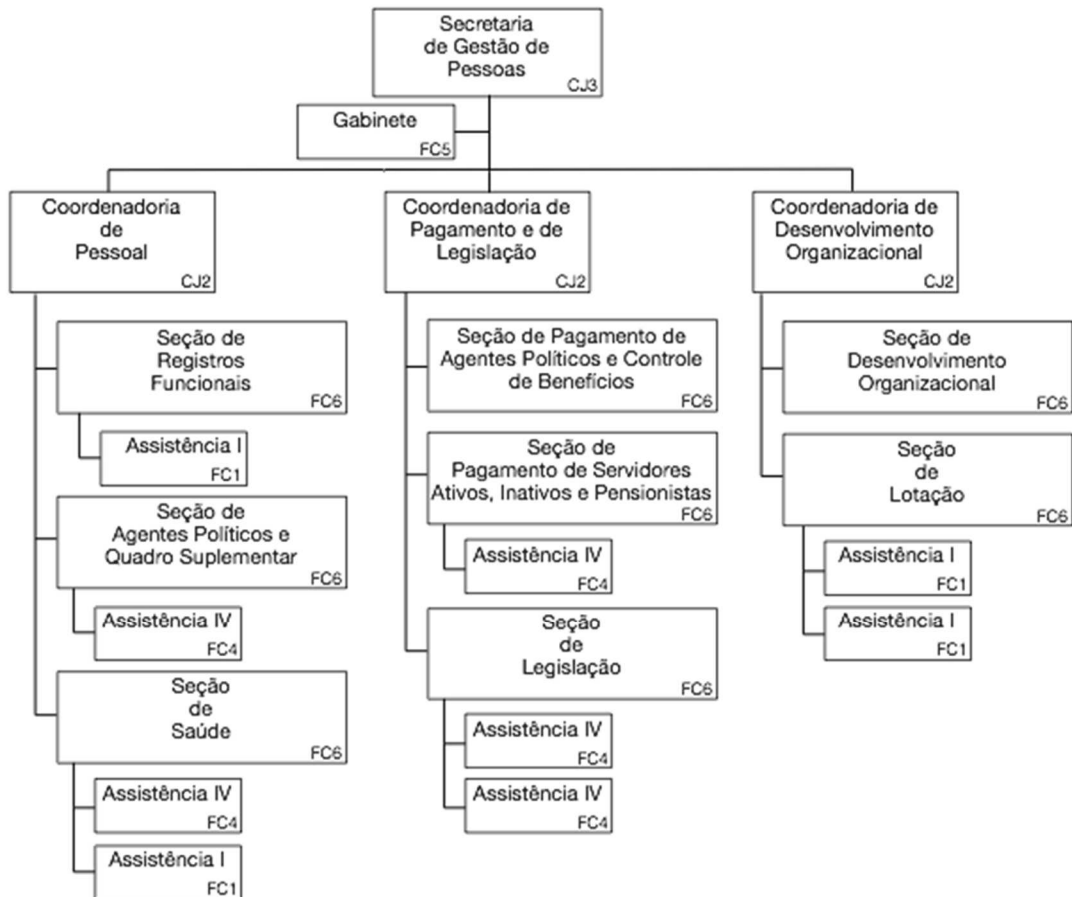
(fl. 6 do Anexo I da Resolução TRESO n. 7930/2015)





Tribunal Regional Eleitoral de Santa Catarina

(fl. 7 do Anexo I da Resolução TRESA n. 7930/2015)





Tribunal Regional Eleitoral de Santa Catarina

(fl. 8 do Anexo I da Resolução TRESO n. 7930/2015)

